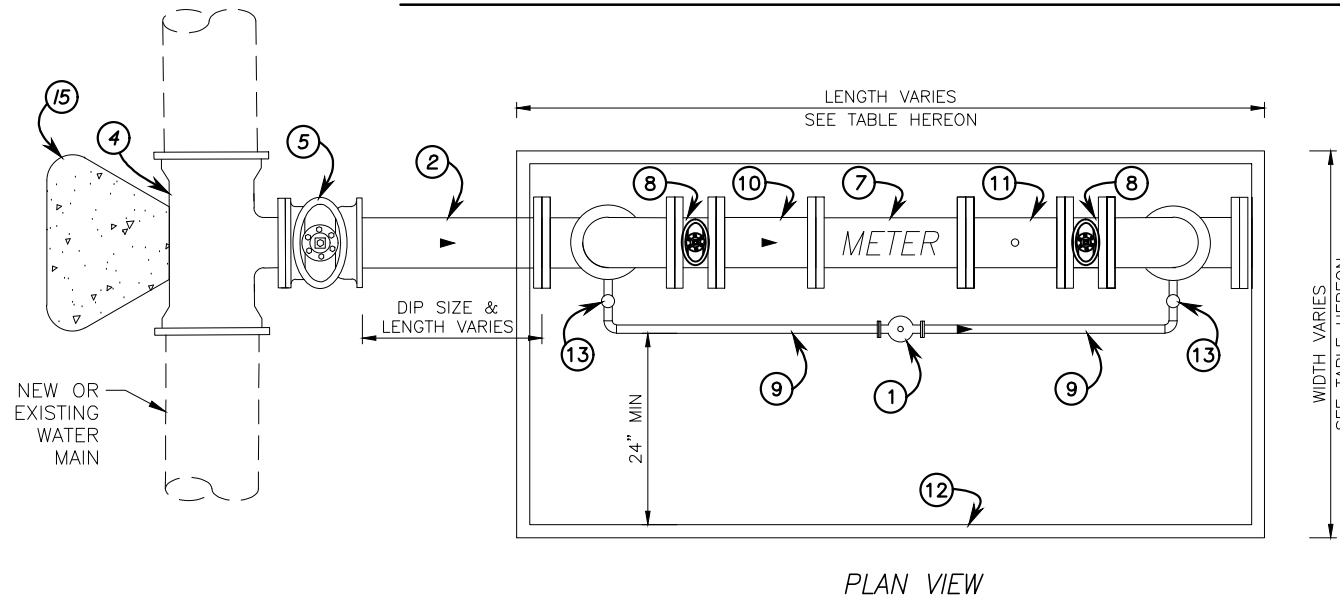


ITEM NO.	MATERIALS
1	2" BYPASS METER
2	CLASS 350 DIP (LENGTH VARIES)
3	FLG x FLG 90° STEEL BEND
4	DI TEE MJ x FLG (FOR NEW PIPELINES) OR 316SS TAPPING SLEEVE (FOR EXISTING PIPELINES)
5	FLG x MJ RW GATE VALVE
6	STL BLIND FLANGE
7	OCTAVE METER
8	FLG x FLG RW GATE VALVE
9	2" TYPE 'K' HARD COPPER PIPING AND NON-COMPRESSION COPPER FITTINGS
10	FLG x FLG STEEL SPOOL (L=2D)
11	FLG x FLG STEEL SPOOL (L=2D) W/ 2" WELDED HALF COUPLING, NIPPLE, AND BALL VALVE
12	PRECAST OPEN BOTTOM CONCRETE VAULT WITH PEDESTRIAN RATED ALUMINUM SPRING ASSISTED HATCHES. SEE TABLE HEREON FOR DIMENSIONS
13	2" LOCKING BALL VALVE
14	FLG x FLG STL SPOOL, W/ 2" WELDED HALF COUPLING
15	THRUST BLOCK (SIZE VARIES)
16	INSULATING FLANGE KIT

3-INCH & GREATER WATER SERVICE

CONSTRUCTION NOTES:

- TEE CUT IN SHALL NOT BE INSTALLED WITHIN 24" OF VALVE, COUPLING, JOINT OR FITTING.
- THE WATER SERVICE SHALL EXTEND PERPENDICULAR TO THE CENTERLINE UNLESS OFFSETS ARE REQUIRED.
- ALL VAULTS SHALL BE ORDERED SPECIFIC TO ACCOMMODATE JOB SPECIFIC INSTALLATION CONSTRAINTS. ALL VAULTS WILL BE EQUIPPED WITH TORSION ASSIST LIDS.
- ALL COMMERCIAL, INDUSTRIAL AND IRRIGATION METER SERVICES WILL REQUIRE A DISTRICT APPROVED BACKFLOW PROTECTION DEVICE.
- BUTTERFLY VALVES CAN BE USED AS AN OPTION WHEN DEPTH IS A CONSTRAINT, WITH DISTRICT APPROVAL.
- EXPOSED PIPING WITHIN THE VAULT SHALL BE EPOXY COATED (TNMEC L69).



VAULT INSIDE DIMENSIONS (MINIMUM)		
SERVICE SIZE	WIDTH	LENGTH
3"	48"	72"
4"	48"	84"
6"	54"	102"
8"	54"	120"
10"	60"	138"
12"	60"	156"