

## MATERIALS

- ① 6" FIRE HYDRANT (6 HOLE), JONES J-4040 (4"x2½") FOR RESIDENTIAL OR JONES J-4060 (4"x2½"x2½") FOR COMMERCIAL/INDUSTRIAL APPLICATIONS, W/ 6" NON-ASBESTOS RING GASKET (⅛"-THK). PAINT THE EXTERIOR W/ (2) COATS OF PRIMER RUST-OLEUM NO. 769 AND FINISH W/ ONE COAT OF SCHOOL BUS YELLOW, RUST-OLEUM NO. 659.
- ② 6" FLG x M.J. BURY ELBOW, 8H.
- ③ 6" DUCTILE IRON PIPE, CLASS 350.
- ④ 6" GATE VALVE - FLG x M.J., CLOW C509, MUELLER 2360 OR APPROVED EQUAL BY DISTRICT
- ⑤ 6" VALVE CAN AND COVER PER W-6 OR W-6A
- ⑥ 6" FLANGED OUTLET ON TEE.
- ⑦ X" MJ x 6" FLG DUCTILE IRON TEE (FOR NEW PIPELINES) OR X" x 6" FLG 316SS TAPPING SLEEVE (FOR EXISTING PIPELINES).
- ⑧ 6" 316SS FIRE HYDRANT CHECK VALVE W/ BREAKAWAY BOLTS (HYDRANT GUARD MODEL HG2-611-822).

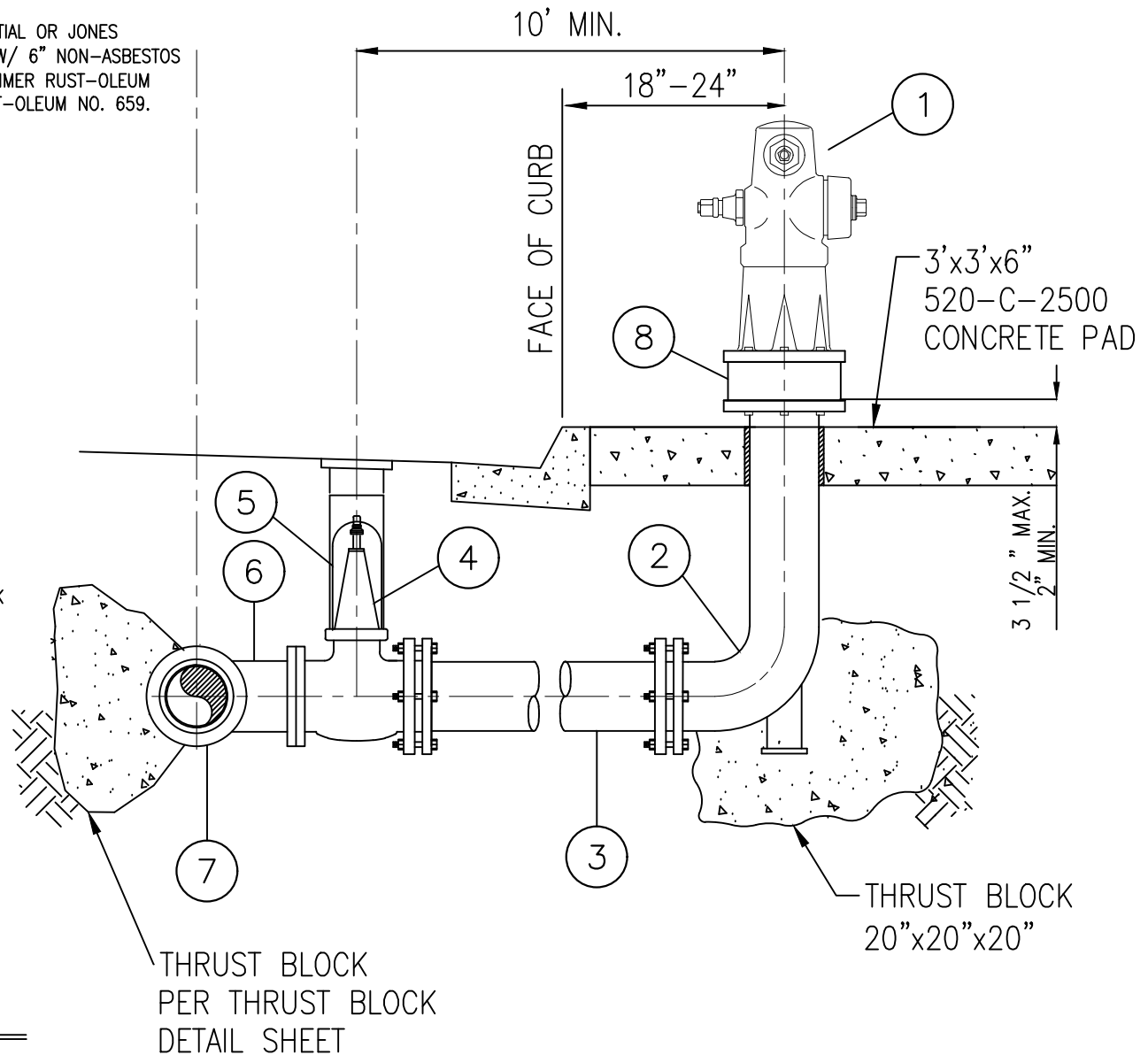
### CONSTRUCTION NOTES:

1. THE LOCATION OF HYDRANTS MUST MEET ALL OF THE FOLLOWING CONDITIONS:
  - A. MAINTAIN MINIMUM 18" DISTANCE FROM BACK OF CURB.
  - B. MAINTAIN MINIMUM 12" DISTANCE FROM EDGE OF SIDEWALK WHEN PLACED IN PARKWAY.
  - C. MAINTAIN 36" CLEAR DISTANCE FROM ANY OBSTRUCTIONS.
2. WHEN THE SIDEWALK IS 5' WIDE OR LESS AND ADJACENT TO THE CURB, FIRE HYDRANTS, AIR RELEASE VALVE AND OTHER INSTALLATIONS THAT PROTRUDE ABOVE THE GROUND SHALL BE LOCATED BETWEEN PROPERTY LINE AND BACK OF SIDEWALK.
3. AS REQUIRED, INSTALL CAST IRON SPOOL, FLANGED WITH STAINLESS STEEL #316 NUT AND BOLTS TO HYDRANT BURY.
4. ALL MECHANICAL JOINTS SHALL BE RESTRAINED WITH EBAA IRON MEGALUGS OR APPROVED EQUAL
5. ASSEMBLY SHALL COMPLY WITH ADA REGULATIONS.

## FIRE HYDRANT ASSEMBLY DETAIL

NOT TO SCALE

NOT TO SCALE



APPROVED BY:

*Tom Coleman* 09/10/2025  
TOM COLEMAN  
GENERAL MANAGER DATE



DRAWING #

W-5

REVISION DATE:

MARCH  
2024

ROWLAND WATER DISTRICT

6-INCH FIRE  
HYDRANT ASSEMBLY

1

OF 1